

# dewitt

## Spot Genie Pro

PORTABLE CARPET &  
UPHOLSTERY CLEANER

Model: SGP-1200



### INSTRUCTION MANUAL

---

Your satisfaction is guaranteed. If you are not completely satisfied with our Spot Genie Pro please let us know. We're committed to making things right.

---

# IMPORTANT SAFEGUARDS

**WARNING! To reduce the risk of fire, electric shock, or injury, read all instructions carefully and completely before using the appliance.**

When using an electrical product, basic precautions should always be followed, including the following:

- Operate only at the voltage specified on the rating label on the bottom of the cleaner.
- Ensure all parts are fully assembled and correctly fitted before using the product.
- This appliance is not intended for use by children and persons with reduced physical, sensory, or mental capabilities or lack of experience and knowledge unless they have been given supervision or instruction concerning the use of the appliance by a person responsible for their safety.
- Children should be supervised to ensure that they do not play with the appliance. Close attention is necessary when used near children, and after use when cooling.
- **WARNING:** Always switch off and unplug the appliance from the electrical outlet before assembling, adding the clean water tank, emptying the wastewater tank, before connecting/disconnecting any parts or accessories, or when not in use. Do not leave plugged-in unattended.
- Do not use with a damaged cord or plug. If the cord is damaged, it must be replaced by a qualified person in order to avoid a hazard.
- Do not unplug by pulling on the cord. Unplug by grasping the plug, not the cord.
- Do not pull or carry by the cord, use the cord as a handle, jam the cord with a closed door, pull the cord around sharp corners or edges, or expose the cord to heated surfaces.
- Only carry the appliance by the carry handle.
- Do not use the appliance outdoors. Keep the appliance away from rain and moisture.
- Do not use the appliance if it has been dropped, has visible signs of damage, is leaking, was left outdoors, or dropped into water.
- Do not immerse in water.
- Do not handle the power cord or appliance with wet hands.
- The appliance must be kept level during operation.

- Use extra care when cleaning on stairs.
- Do not touch any hot areas on the cleaner. It is normal for the appliance to heat up during operation.
- Always keep hands, hair, fingers and clothing away from the suction nozzles.
- Do not put any object into openings. Do not use with any opening blocked; keep free of dust, lint, hair, and anything that may reduce air flow. Do not use sharp objects to clean the hose as they can cause damage.
- Always remove the mains plug from the socket and allow the carpet cleaner to cool down completely before cleaning.
- Empty the water tanks when the appliance is not in use.
- Use only as described in this manual. Use only manufacturer's recommended attachments.
- This product contains no serviceable parts. If the appliance is not working as it should, contact Mueller customer support.
- This appliance is intended for domestic household use only and should not be used for any other purpose other than the purpose intended according to this manual, or in any other application, such as for non-domestic use or in a commercial environment.

**! CAUTION: Not to be used for grooming a pet.**

## SAFE USAGE

**! CAUTION: To reduce the risk of damage:**

- Do not operate without Tanks and Filters in place.
- Do not operate without water in the Clean Water Tank. Always top up with water in good time. Never remove the water tank while the unit is operating.
- Never fill the Clean Water Tank with anything other than water and an appropriate cleaning solution.
- Do not use without the Clean Water Tank Screw Cap in place as this can cause leakage. Ensure that the screw cap has been tightly screwed on before use.
- Never aim the liquid sprayer towards wires or equipment containing electrical components.
- Never aim the liquid sprayer at people, animals or plants.
- Do not use over electrical floor outlets. Drips may occur.

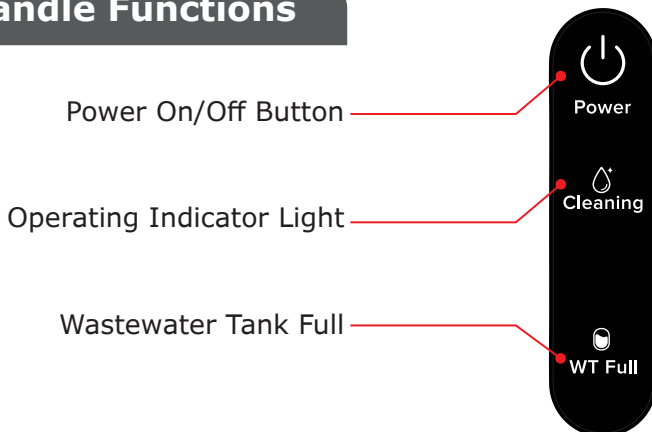
- **Never use as a vacuum cleaner; Do not use to pick up:**
  - large or sharp broken objects such as glass, metal, needles, pins
  - harmful or corrosive liquids (e.g. solvents, corrosive liquids, strong detergents)
  - flammable or explosive substances (e.g. alcohol, gasoline, oil)
  - burning or glowing objects (e.g. cigarettes, matches, hot ashes, flames)
  - dry dust or large quantities of powder
  - rubbish or large plastics
  - large quantities of sand, pebbles, etc.
- **Do not use on leather, wax-polished furniture or floors, synthetic fabrics, velvet, or other delicate, water-sensitive materials on non-sealed surfaces.**
- **Always check whether a surface is suitable for treatment by carrying out a test beforehand on a concealed area. Test for colorfastness in a small, hidden area. Gently rub the surface with a dampened white cloth. Wait ten minutes and check for color removal or bleed with a white paper towel.**
- **Do not use on dry-clean only fabrics.**
- **Do not use on hardwood floors. Using the nozzles on hardwood may scratch or damage your floor.**
- **To avoid damage to hardwood floors underneath area rugs or carpet, place waterproof material (e.g. plastic) underneath them before cleaning.**
- **Never leave the cleaner in one spot on wooden, laminate, or other porous surfaces for an extended period of time, as any water leakage or drips may damage the floor surface.**

**SAVE THESE INSTRUCTIONS**  
**FOR HOUSEHOLD USE ONLY**

# PARTS



## Handle Functions



## Nozzle Attachments

### Tough Stain Brush Nozzle

Use: Stubborn stains, deep cleaning



### Crevice Nozzle

Use: For corners, stair crevices, baseboards, around furniture, and other hard-to-reach areas.



### Upholstery Nozzle

Use: Spills, gentle fabrics, close suction, in-between couch cushions, car seats etc.



### Hose Rinse Nozzle

Use: Assists in self-cleaning. Connects to the end of the hose to seal and flush clean water through the system after use.



## Other Parts & Accessories

### Hose Hook

Attach to the body of the unit for easy hose storage.

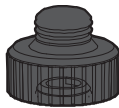


### Water Filter Sponge

(Preinstalled - Located under the Clean Water Tank)



### Clean Water Tank Screw Cap



### Wastewater Tank Rubber Seal

(Preinstalled)

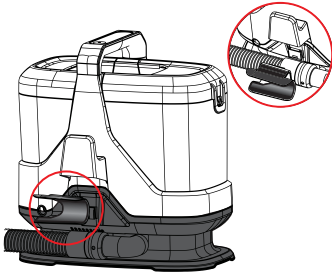


### Air Inlet Sponge

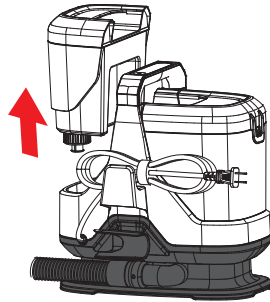
(Preinstalled - Located under the Wastewater Tank)



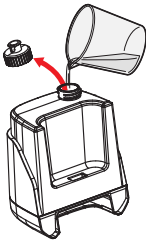
# ASSEMBLY



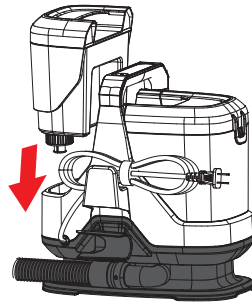
- 1** Attach the Hose Hook to the back of the unit. This is for easier hose storage.



- 2** Slide up and lift out the Clean Water Tank from the base.



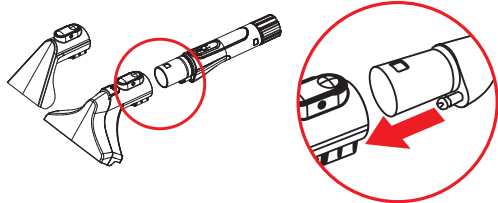
- 3** Remove the screw cap. Fill the tank with clean water to the MAX line and replace the cap. The maximum tank capacity is approx **1L / 1QT.** Add water at or below 104°F.



- 4** Slide on the Clean Water Tank back onto the base.

- 5** Connect your chosen nozzle tool to the Hose Handle.

**Important:** Make sure the slots on the nozzle are lined up with the water sprayer on the handle for proper operation.



# CLEANING SOLUTIONS

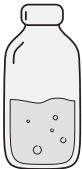
## ADD TO CLEAN WATER TANK

When filling the Clean Water Tank, you can dilute a small amount of concentrated carpet/upholstery cleaner together with the water. Always add water before adding the concentrated formula.

## PRETREATMENTS

You can also pretreat stubborn stains or heavily soiled spots in high-traffic areas using specially formulated spot pretreatments. This will generally help to loosen and lift stains more effectively. Wait 5-10 minutes before using the Spot Genie Pro.

## WHAT CLEANING SOLUTIONS TO CONSIDER

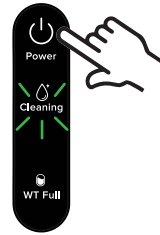
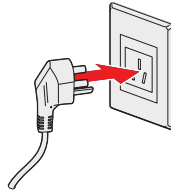
	<b>Recommended</b> ✓	<b>Not Recommended</b> ✗
	<ul style="list-style-type: none"><li>• Strong alkaline ionized water</li><li>• Baking soda</li><li>• Citric acid</li><li>• White vinegar</li><li>• Enzymatic cleaners (for organic stains)</li><li>• Low foam-producing carpet cleaner</li></ul>	<ul style="list-style-type: none"><li>• Detergent for kitchen use</li><li>• Bleach-based products</li><li>• Strong perfumed deodorizers</li><li>• Strong acidic detergent</li><li>• Corrosive or flammable solvents</li><li>• High foam-producing carpet cleaner</li></ul>

### Usage Tips:

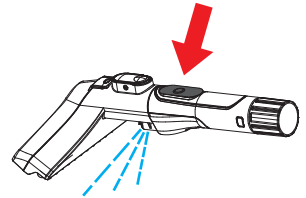
- **Always Test:** Before using any new detergent or solution, conduct a spot test on an inconspicuous area of the carpet or upholstery to check for colorfastness and material compatibility.
- **Follow Instructions:** Use according to the manufacturer's guidelines regarding dilution and machine compatibility.
- **Proper Ventilation:** Ensure adequate ventilation during and after carpet cleaning to speed up drying time and dispel any fumes.
- **Avoid Contact:** To help prevent matting and resoiling, avoid contact with carpets until they are dry. Keep children and pets away from carpets until they are completely dry.

# OPERATING

- 1** Plug in the Spot Genie Pro.  
Push the Power Button On.  
The Cleaning indicator light will illuminate GREEN.

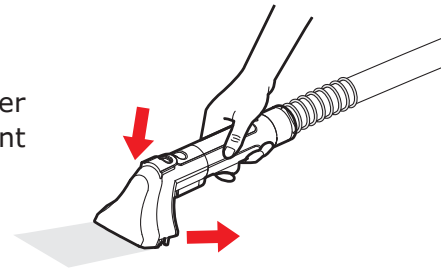


- 2** Position the nozzle approximately 5 inches over the spot or stain. Use the Sprayer button on the hose handle to spray the soiled area with clean water to help lift the stain.  
Do not spray continuously in the same area to avoid oversaturation.



- 3** **Light Stains**

To lift the stain, suction up the dirt and water by applying downward pressure on the front of the nozzle and pulling towards you.  
Repeat steps 2 and 3 as needed.

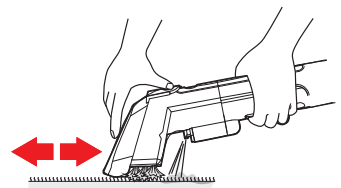


- 4** **Heavy Stains**

Apply a pretreatment or, alternatively, use the sprayer to apply the diluted cleaning solution directly to the stain. *Refer to the 'Cleaning Solutions' section for more information.*

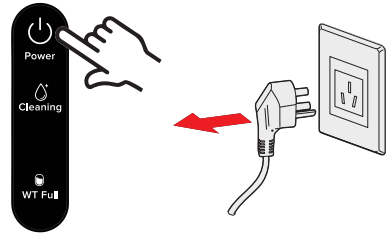
Use the Tough Stain Brush Nozzle to scrub the stain in a back-and-forth motion.

Then suction up the dirt and cleaning solution by applying downward pressure on the front of the nozzle and pulling towards you. Repeat as needed.



**Important:** Absorb as much cleaning solution and moisture as possible. Leave the carpet/material to air-dry in a well-ventilated room or outdoors if possible.

- 5** Turn off the Power Button and unplug the unit. Follow the cleaning and maintenance instructions.



## Thermal Heat Protection

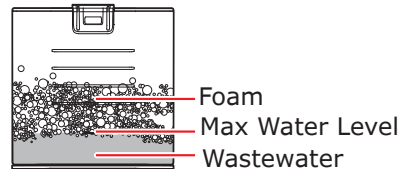
The Spot Genie Pro is equipped with a thermal protector to prevent overheating. If the unit stops due to the thermal protector activating, follow these steps:

1. Turn the unit OFF and unplug it from the electrical outlet.
2. Empty the Wastewater Tank.
3. Check for and remove any obstructions.
4. Allow the unit to cool for 1 hour before resuming use.

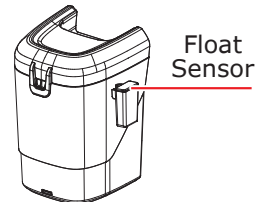
# CLEANING AND MAINTENANCE

## Wastewater Tank Full

**Max Level:** Empty the tank before it surpasses the maximum water level.



**Sensor Float and Automatic Stop:** If the tank continues to fill past the maximum level, the float sensor activates, stopping the suction.



The 'Cleaning' indicator light will turn OFF and the 'WT Full' will start to flash RED.



**Empty:** If the Wastewater Tank (WT) is Full, turn off the machine, and empty the tank using the instructions that follow.

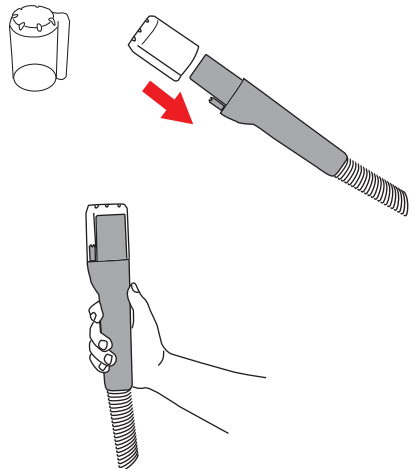
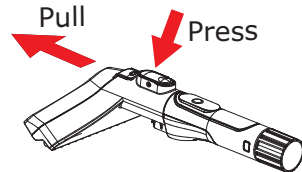
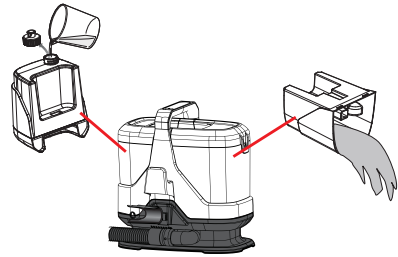
**Reinsert:** Gently slide the wastewater tank back on the unit for further cleaning. Do not shake or move the cleaner in the process to avoid leakage.

## Cleaning After Use

**!WARNING: Always allow the unit to cool before cleaning and maintenance.**

### Clean the Hose

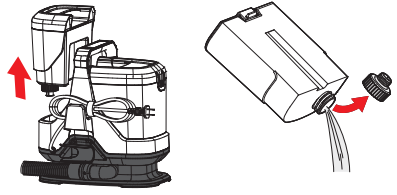
- 1** Remove the Clean Water Tank and fill to the Max line with warm water (Max 104°F/40°F). Empty the Wastewater tank then reattach.
  - 2** Detach the Cleaning Nozzle from the hose by pressing the Nozzle Release Button.
  - 3** Attach the Hose Rinse Nozzle to the end of the hose.
  - 4** Turn the Power Button on. Press and hold the Sprayer button for 30 seconds. The clean water will rush through the hose, effectively cleaning and removing odor-causing bacteria left in the hose.
- Repeat as needed. Let unit run for 5-10 seconds before turning off.



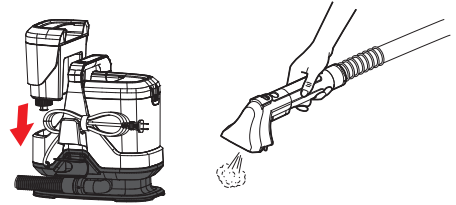
## Empty the Clean Water Tank

- 1 Turn the power OFF. Remove the Clean Water Tank. Unscrew the cap and drain the water.

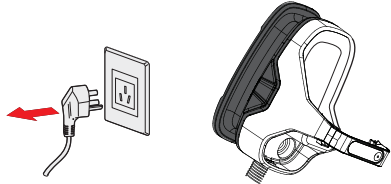
**Note:** Leaving water in the tank can create mold or scaling within the unit.



- 2 Reattach the Clean Water Tank. Turn the power ON and press the Sprayer button to drain excess water from the unit. Repeat until fully drained.

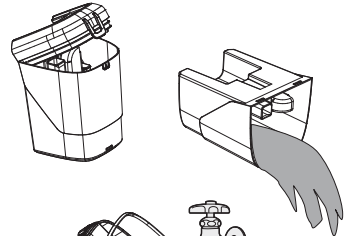


- 3 Turn off the unit and unplug the power cord. Remove both tanks and drain any excess water from the base of the unit. Allow to dry.



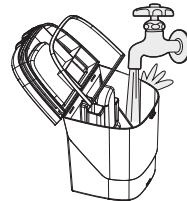
## Clean the Wastewater Tank

- 1 Lift out the Wastewater tank from the unit. Detach the lid. Pour out the dirty water from the tank.

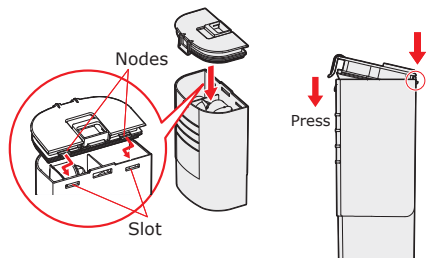


- 2 Clean and rinse the tank, lid, and rubber seal. Use a mild detergent and soft brush to help eliminate odors.

**Note:** the rubber seal is detachable for easier cleaning.

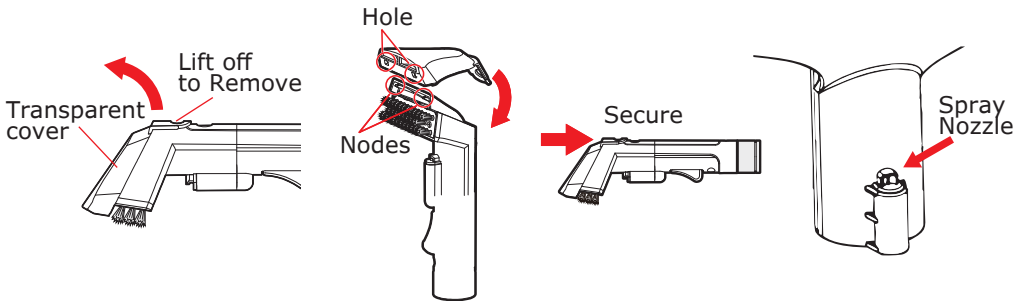


- 3 Reattach the rubber seal and lid to the tank once the parts are dry.

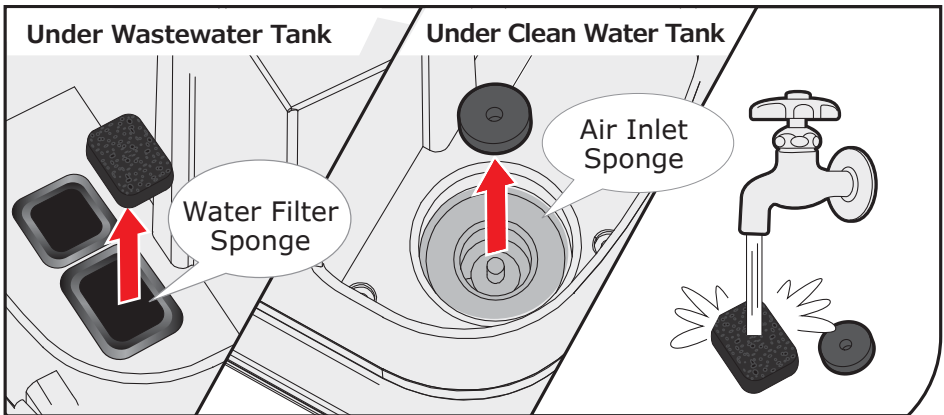


## Clean the Nozzles

- 1 Wash and rinse all nozzles with warm water and mild detergent. Dry thoroughly.
- 2 The transparent cover of the Tough Stain Brush Nozzle can be detached for easier cleaning.
- 3 Always check the spray nozzles for any blockages.



## Clean Sponges - As Required



- 1 Locate the Air Inlet Sponge and Filtering Sponge located in the base of the unit.
- 2 Use tweezers or a small tool to remove the sponges.
- 3 Rinse thoroughly and air-dry before reinserting.

# TROUBLESHOOTING

PROBLEM	POSSIBLE CAUSE	POSSIBLE SOLUTION
<b>Cleaner won't start</b>	<ol style="list-style-type: none"> <li>1. Power cord not securely plugged in.</li> <li>2. Wastewater Tank is full.</li> <li>3. Overheat protection initiated.</li> <li>4. Blown fuse or tripped breaker.</li> <li>5. Requires maintenance.</li> </ol>	<ol style="list-style-type: none"> <li>1. Ensure the power cord is properly connected.</li> <li>2. Empty the Wastewater Tank.</li> <li>3. Allow the unit to cool down before restarting. (Approx 1 hr)</li> <li>4. Check and replace fuse or reset breaker as needed.</li> <li>5. Contact customer support.</li> </ol>
<b>Cleaner has low suction or won't pick-up</b>	<ol style="list-style-type: none"> <li>1. Power button not turned on.</li> <li>2. Wastewater Tank not properly installed.</li> <li>3. Wastewater Tank is full.</li> <li>4. Wastewater Tank is clogged.</li> <li>5. Air pathway is blocked.</li> <li>6. Hose is abnormal.</li> </ol>	<ol style="list-style-type: none"> <li>1. Turn on the power button.</li> <li>2. Confirm the Wastewater Tank is correctly positioned.</li> <li>3. Empty the Wastewater Tank.</li> <li>4. Clean the Wastewater Tank and air inlet sponge.</li> <li>5. Follow cleaning instructions to flush the hose clean.</li> <li>6. Check for cracks, breaks or clogs.</li> </ol>
<b>Water leaking</b>	<ol style="list-style-type: none"> <li>1. Wastewater Tank is full.</li> <li>2. Wastewater Tank not properly installed.</li> <li>3. Clean Water Tank not installed correctly.</li> <li>4. Unit shifting excessively during operation.</li> </ol>	<ol style="list-style-type: none"> <li>1. Empty the Wastewater Tank.</li> <li>2. Ensure the Wastewater Tank is correctly placed in the base.</li> <li>3. Check the Clean Water Tank is properly installed and screw cap is tight.</li> <li>4. Ensure the unit is on a stable, level surface and minimize movement.</li> </ol>

PROBLEM	POSSIBLE CAUSE	POSSIBLE SOLUTION
<b>Nozzle does not dispense water</b>	<ol style="list-style-type: none"> <li>1. Clean Water Tank is empty.</li> <li>2. Clean Water Tank not properly installed.</li> <li>3. Nozzle is blocked.</li> <li>4. Air is trapped in the pump and hose.</li> </ol>	<ol style="list-style-type: none"> <li>1. Fill the Clean Water Tank.</li> <li>2. Check the Clean Water Tank is properly installed.</li> <li>3. Clean parts thoroughly.</li> <li>4. Turn on the cleaner. If the hose doesn't spray, prime the pump by lowering the hose to the floor and holding down the sprayer button for up to one minute.</li> </ol>
<b>Motor sounds high-pitched</b>	<ol style="list-style-type: none"> <li>1. Sensor Float in the Wastewater Tank is activated.</li> <li>2. Wastewater Tank is clogged.</li> <li>3. Air pathway is blocked.</li> </ol>	<ol style="list-style-type: none"> <li>1. Empty the Wastewater Tank.</li> <li>2. Clean the Wastewater Tank and Air Inlet Filter.</li> <li>3. Follow cleaning instructions to flush the hose clean.</li> </ol>

## STORAGE

**Warning! Fully drain the unit and dry thoroughly to avoid leaks or water damage during long-term storage.**

- 1 Wrap the power cord around the cord hook for convenient storage.
- 2 Ensure the Hose Hook part has been attached to the back of the unit.
- 3 Wrap the hose around the unit and secure the hose handle in the hook.
- 4 Store appropriately indoors in a dry place. Do not expose to freezing temperatures.





## **Your purchase comes with a 100% satisfaction guarantee from DeWitt**

---

If you are not happy with the product for any reason, please contact us at ***concierge@dewittsteam.com*** with your feedback or questions, and we will do our best to make things right for you!

**DeWitt USA**

2701 Kimball Ave, Pomona, CA 91767

[concierge@dewittsteam.com](mailto:concierge@dewittsteam.com)