

POHL+SCHMITT

# CAN OPENER

Model: CO-222



READ THIS MANUAL THOROUGHLY BEFORE USING  
THE PRODUCT AND SAVE IT FOR FUTURE REFERENCE

# IMPORTANT SAFEGUARDS

When using electrical appliances, basic precautions should always be followed, including the following:

**1. Read all instructions.**

2. To protect against electric shock, do not immerse cord, plug or can opener in water or other liquid.

3. Unplug from outlet when not in use, before putting on or taking off parts, and before cleaning.

4. Close supervision is necessary when the appliance is used by or near children.

5. The blade and cutter are sharp. Be careful when handling, and avoid contact with moving parts.

6. Do not operate any appliance with a damaged cord or plug, or after the appliance malfunctions, or if it has been dropped or damaged in any manner.

7. The use of attachments not recommended or sold by the manufacturer may cause fire, electrical shock, or injury.

8. Do not let the cord hang over the edge of a table or counter or touch hot surfaces, including the stove.

9. Do not use outdoors or for commercial purposes.

10. Do not open pressurized cans (aerosol type).

11. Do not open cans of flammable liquids such as lighter fluids.

12. Do not leave unattended while in use.

13. This appliance is not intended for use by persons (including children) with reduced physical, sensory or mental capabilities, or lack of experience and knowledge unless they have been given supervision or instruction concerning use of the appliance by a person responsible for their safety.

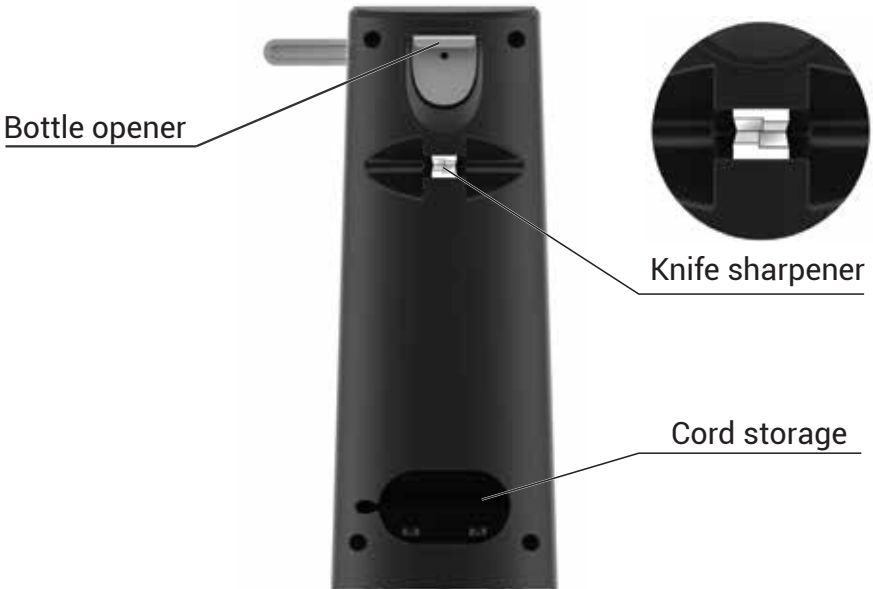
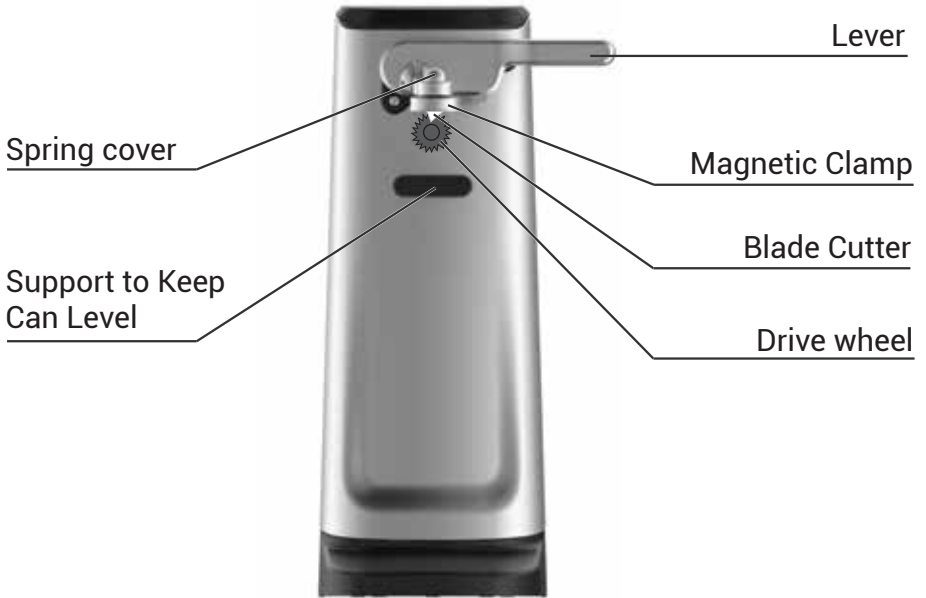
**14. Do not use this appliance for any other purpose other than intended use.**

**!** **15. WARNING!** To reduce the risk of personal injury, keep hair and loose clothing away from lid opener and other moving parts of the can opener while using.

**!** **16. WARNING!** Keep out of reach of children.

**SAVE THESE INSTRUCTIONS**  
**FOR HOUSEHOLD USE ONLY**

# PARTS



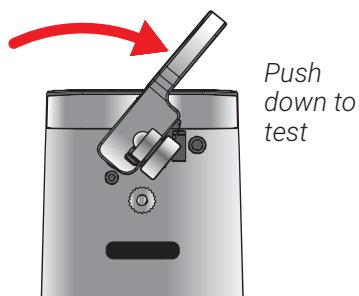
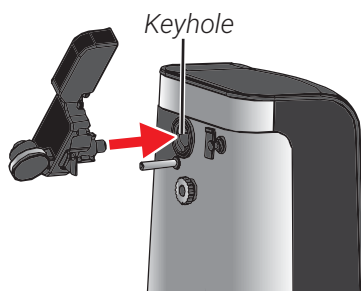
# OPERATING INSTRUCTIONS

Remove the unit and lever from the packaging. Keep all packaging materials, including plastic, away from children.

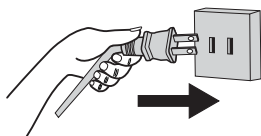
1. Attach the Lever to the Can Opener. Align the metal pin on the Lever with the Keyhole on the Can Opener. Push the Lever forward to attach, then press down to ensure it has been properly assembled.

**! WARNING:** *The blade is extremely sharp. Be careful when handling the lever.*

**! NOTE:** *The lever is supposed to be a bit loose in order to adjust to the size of a can.*



2. Connect the plug to an electric outlet.

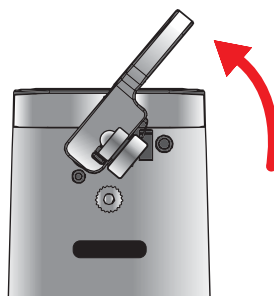


## Opening a Can

**! NOTE:** *The diameter of the can should be between 2 to 4", with maximum height 7". The maximum weight allowance is 21 oz.*

### Step 1:

Lift the lever to release the can opener's blade cutter and clamp.



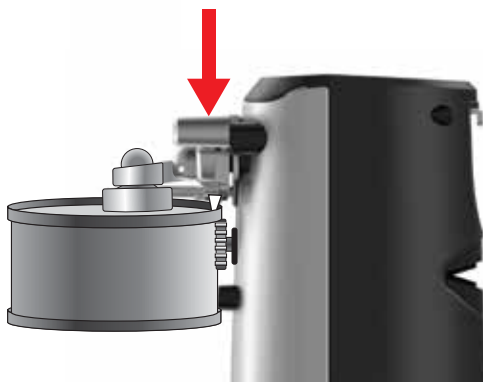
**Step 2:**

Position the can so that its outer rim sits directly above the top of the Drive Wheel.



**Step 3:**

Push the lever downwards, so the Magnetic Clamp attaches to the top of the can. The Blade Cutter should sit on the inside edge of the can.



**Step 4:**

Press down on the lever to start opening the can automatically.

For cans over 1 Pound, we recommend holding down the lever, and the base of the can to prevent over cutting or spillage.

**Step 5:**

Once the lid has been opened with a full circular cut, the Lever will pop up and the unit Can Opener will stop automatically. Hold the base of the can with one hand, and raise the lever with the other to release and remove the can.

**NOTE:** The can opener's magnet will hold onto the lid of the can when you disengage the clamp. Remove the lid from the magnet and recycle it. Be careful of sharp edges.

**IMPORTANT!** Do not open more than 5 cans continuously or use the Can Opener for more than 1 minute, whichever comes first. Allow at least 15 seconds between each can opening. After 1 minute of continual use, allow the Can Opener to rest for 20 minutes before reusing.

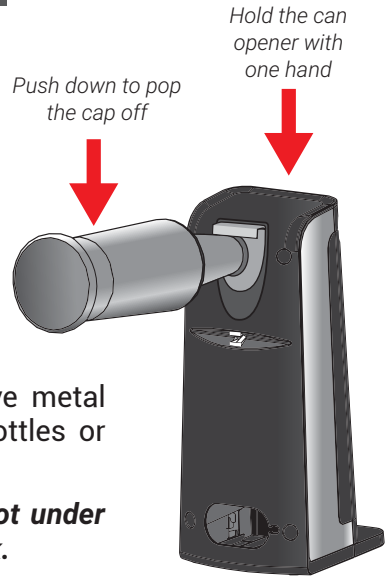
# Opening Bottle Caps

Before opening bottle caps, **unplug** the power cord first.

1. To open a bottle cap, grasp the bottle and position the cap under the metal hook at the back of the bottle opener.
2. Hold the can opener with one hand and push down the bottle to pop the cap off with the other hand.

**NOTE:** The bottle opener will only remove metal bottle caps. Do not use for screw-top bottles or pull-ring caps.

- ! **IMPORTANT!** Be sure the bottle neck is not under the metal hook part, or the glass may break.



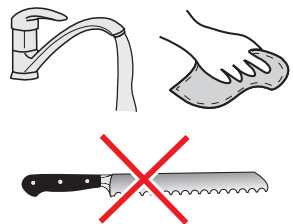
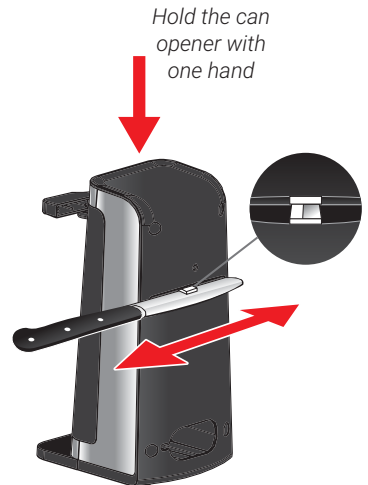
# Knife Sharpening

1. Make sure the cord is **unplugged**.
2. Place the knife in the slot of the knife sharpener at the back of the unit.
3. For best results, **keep moving the entire blade of the knife back and forth** until desired sharpness is achieved.
4. After sharpening, **wash and dry** the knife. Always take extra caution when handling newly sharpened knives.

- ! **NOTE:** The sharpener can also be used for sharpening **household scissors**.

## KNIFE SHARPENING TIPS

1. Clean and dry knives before sharpening.
2. Do not attempt to sharpen ceramic knives or serrated knives, as this will smooth their edges.



## TIPS

- This can opener will open all standard size circular cans.
- It should not be used on cans that have alternate methods of opening (including but not limited to rolling key and peel-off foil). It also should not be used with rimless cans or cans with angled corners.
- Cans with aluminum lids will not adhere to the magnet.
- If there is a dent in the rim of the can, open the other side or place the blade beyond the dent. If the can opener stalls, use a light touch to turn the can to aid the cutting process.
- Frozen juices or foods in cardboard cans should be opened as soon as they are removed from the freezer.

## CLEANING AND MAINTENANCE

1. Before cleaning any part of the can opener, unplug the cord.
2. To remove the lever for easy cleaning, lift the lever and pull it out. The blade assembly can be cleaned with a damp cloth, then dried thoroughly. **The handle is NOT dishwasher-safe.**
3. Replace the lever by holding it in the raised position and pushing back into the place. Be sure the lever is pushed all the way in.
4. Before replacing the handle, wipe the can opener housing, and the area around the drive wheel with a slightly damp cloth or sponge. To remove stubborn spots, wipe surfaces with nylon or mesh pad and soapy water, followed by a clean, damp cloth. Do not use abrasive cleaners on any part of the can opener as they can damage the finish.
5. Do not immerse the main part of the can opener into water as this could cause electric shock.
6. When not in use, unplug the cord and gently push the cord back into the slot at the back of the unit.



## Your purchase comes with a 100% satisfaction guarantee from Pohl+Schmitt

---

If you are not happy with the product for any reason, please contact us at [support@pohlschmitt.com](mailto:support@pohlschmitt.com) with your feedback or question, and we will do our best to make things right for you!

# POHL+SCHMITT

**POHL+SCHMITT USA**

11923 NE Sumner St, Portland, OR 97220

E-mail: [support@pohlschmitt.co](mailto:support@pohlschmitt.co)

Web: [pohlschmitt.co](http://pohlschmitt.co)